



ERCOT Grid Operations
Wind Integration Report : 12/24/2015

Current Daily Values:

Peak Load	36,977 MW
Peak Load Hour (HE)	19
Wind at Peak Load Hour	4,636 MW

Max Wind	7,891 MW
Max Wind Time	01:29
Penetration at Max Wind Time	28.93 %

Max Wind Penetration	29.26 %
Max Wind Penetration Time	03:15
Wind Generation at Max Wind Penetration Time	7,680 MW

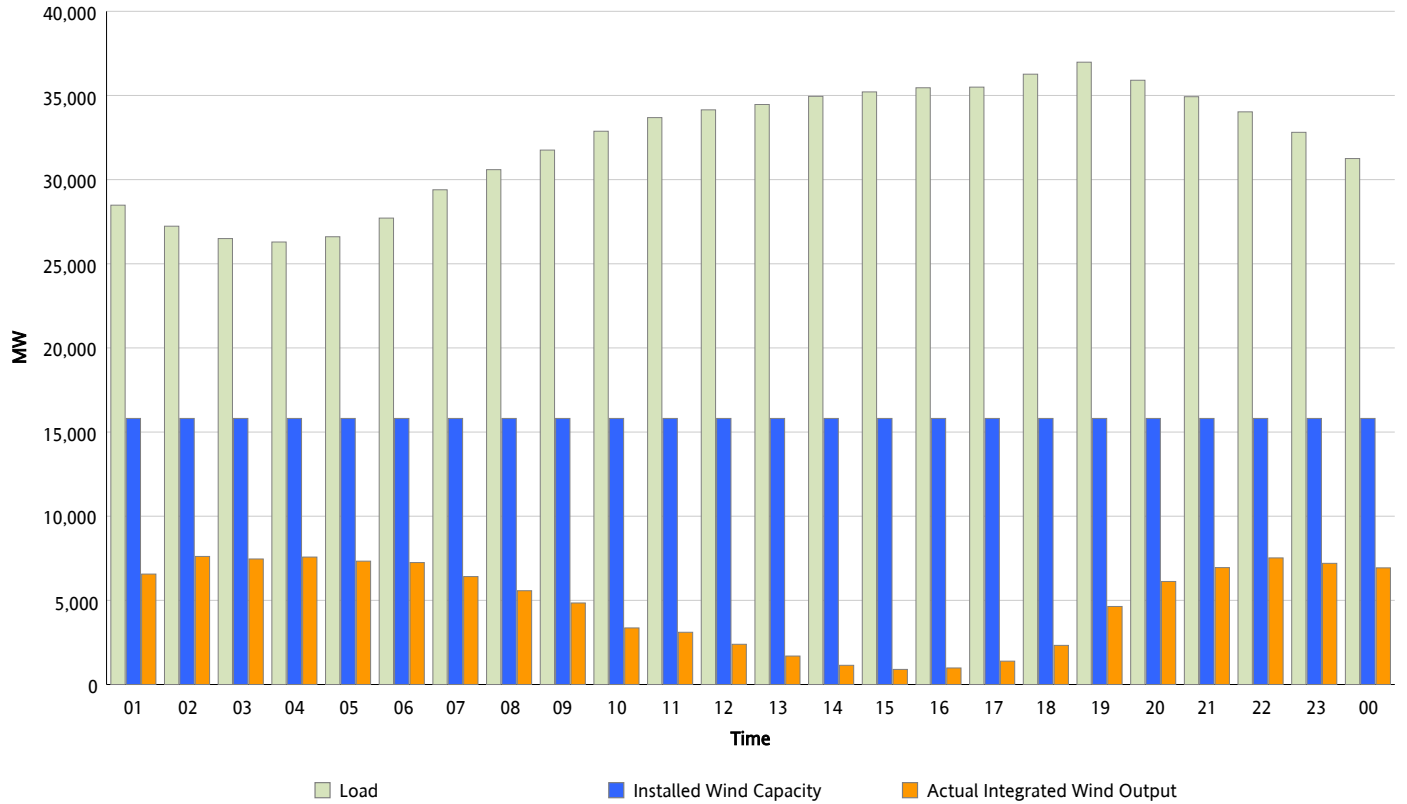
All Time Record Values:

Record Wind Generation	13,883 MW
Record Wind Generation Time	12/20/2015 11:07
Penetration at Record Wind Generation Time	41.27 %

Record Wind Penetration	44.71 %
Record Wind Penetration Time	12/20/2015 03:05
Wind Generation at Record Wind Penetration	13,057 MW

Hourly Average Actual Load vs. Actual Wind Output

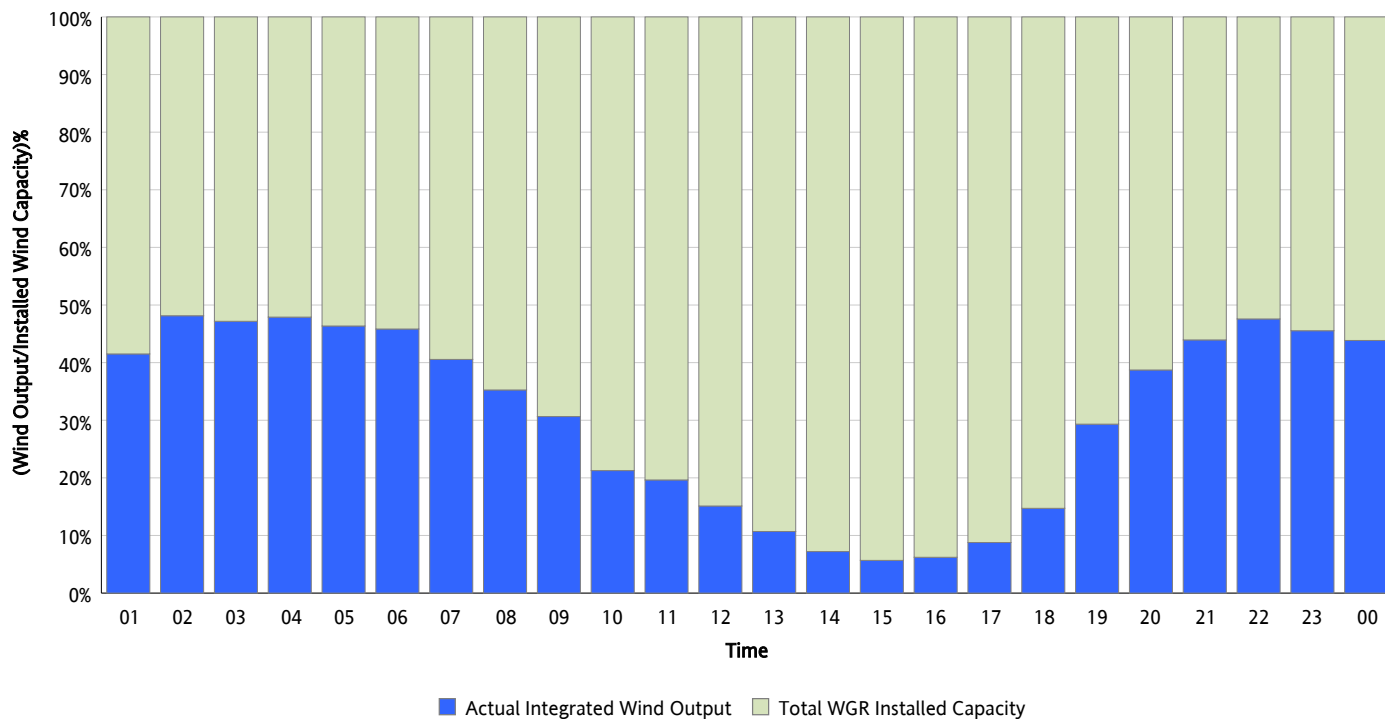
12/24/2015



* Wind Record and Wind Max represent instantaneous values and the rest of the values are integrated over the hour.
Capacity numbers used in the graphs are based on the expected commercial operation date of each Wind Generation Resource.

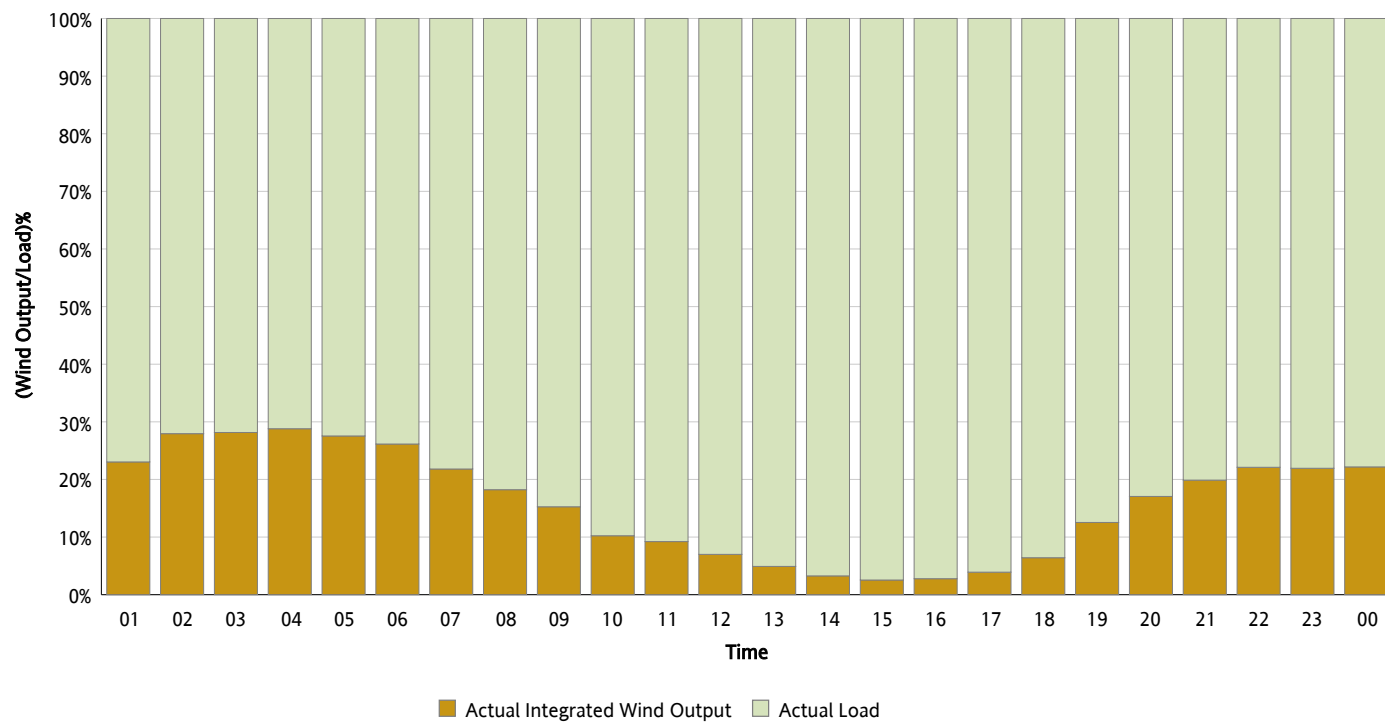
Actual Wind Output as a Percentage of the Total Installed Wind Capacity

12/24/2015



Actual Wind Output as a Percentage of the ERCOT Load

12/24/2015



ERCOT Load vs. Actual Wind Output

12/17/2015 - 12/24/2015

